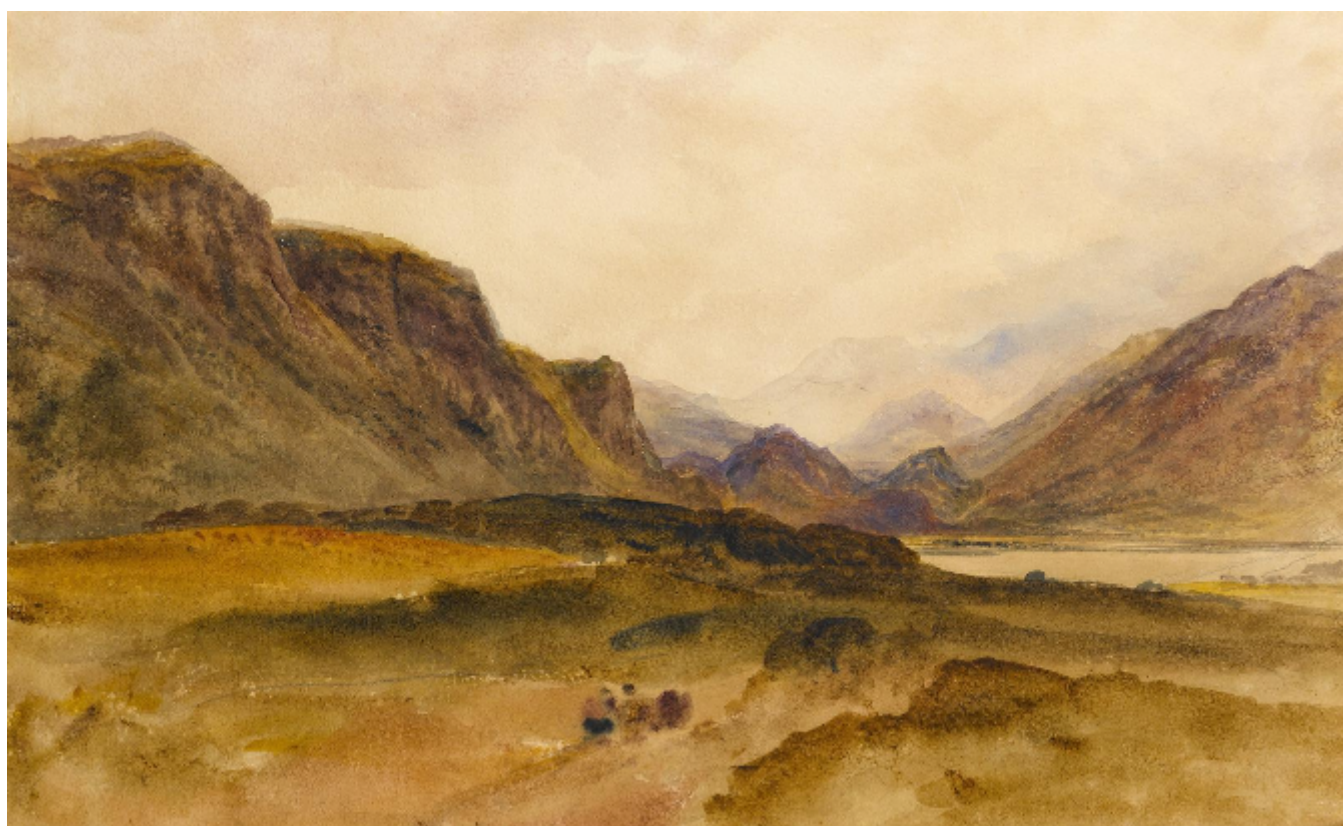


## View of Derwentwater, Cumbria

Peter De Wint

Sold



REF: 1029

## Description

Peter de Wint (1784-1849)  
View of Derwentwater, Cumbria

Watercolour over pencil  
29.9 by 46.2 cm., 11  $\frac{3}{4}$  by 18 in.

This is a view looking south down Derwentwater from Castlerigg with Walla Crag to the left and Maiden Moor.

De Wint was a frequent visitor to the Lake District in the 1830s and 1840s. He often stayed with the Howard family at Levens Hall and the Lonsdales at Lowther Castle.