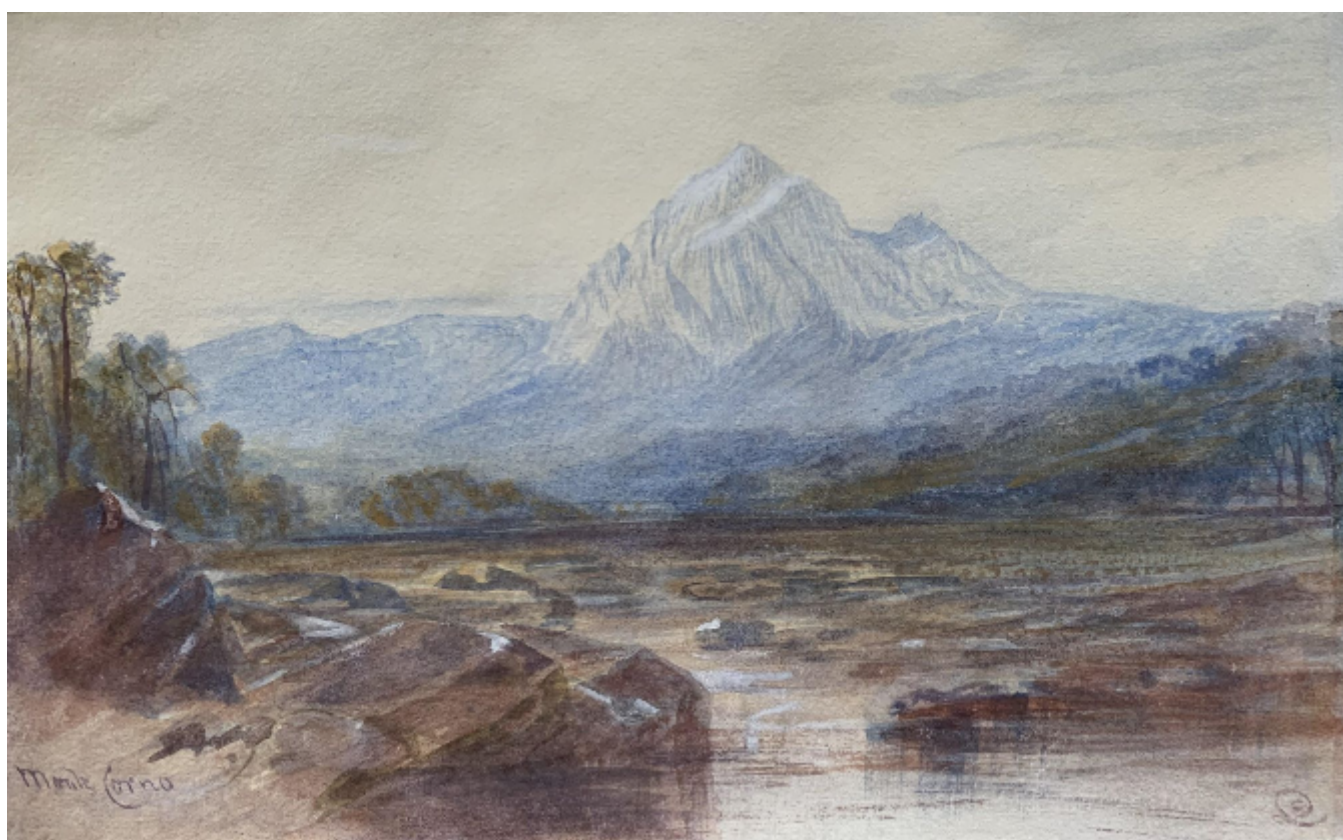


Monte Corno
Edward Lear

Sold



REF: 2436

Description

Edward Lear (1812-1888)
Monte Corno (Gran Sasso)

Signed in monogram and titled Monte Corno
Watercolour
16.1 x 25.4 cm 8 7/8 x 11 3/4 in.

Lear has depicted Monte Corno, situated in the Abruzzi, is the highest point of the Apennines at 9,554 feet (2,912 metres). Snow-covered much of the year, the mountain has the southernmost glacier in Europe on its northern face, the Calderone, but climate change is ending its life. The peak forms part of the Gran Sasso range which extends for some 22 miles.