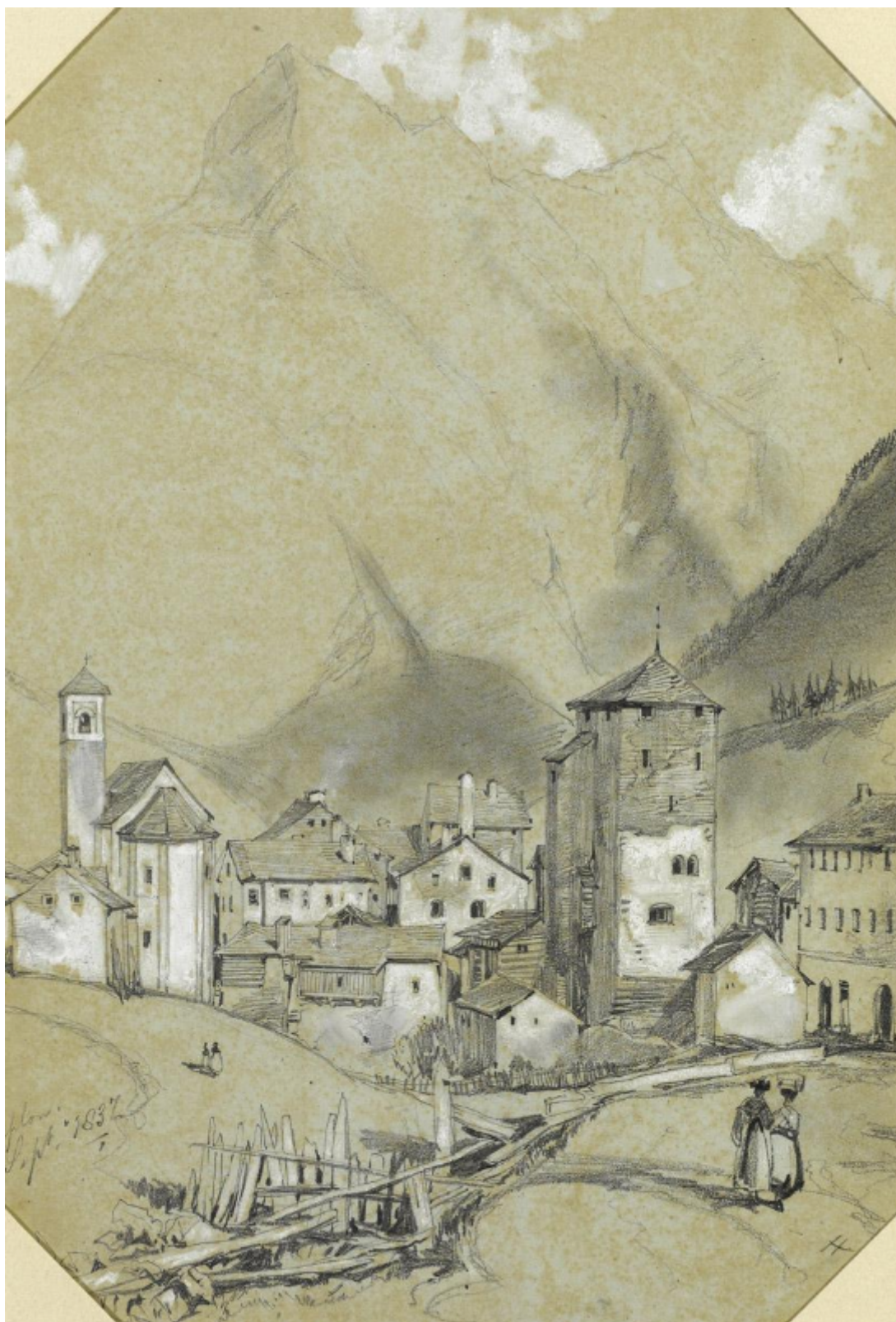


Simplon, Switzerland

Edward Lear

Sold



REF: 693

Description

Edward Lear (1812-1888)
Simplon, Switzerland

inscribed lower left: ...mplon/Sept. 1837 and inscribed with H lower right
Pencil heightened with white on grey paper, with corners cut
32.4 by 22.6cm., 12 $\frac{3}{4}$ by 8 $\frac{3}{4}$ in.

The Simplon Pass is historically one of the major routes across the Alps from Switzerland to Italy. In the early nineteenth century a road through the pass was built to link Brig in Switzerland with Domodossola in Italy.